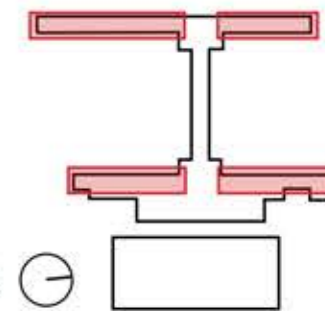


TERMINAL - CONCOURSES

WALL-BASED WORKS

KEY PLAN



LOCATION DESCRIPTION:

The gate lounges are passengers' first and last impression of Kansas City. Central circulation is flanked on both sides by seating areas. A high roof over the circulation space is ringed by clerestories bringing natural light into the concourses. The primary finishes in the space are acoustic tile and natural hemlock wood ceilings, terrazzo flooring, carpet, and large format porcelain tile walls.

COMMISSION DESCRIPTION:

Wall-based/wall-mounted artworks may include (but not limited to) traditionally framed artworks, drawings, paintings, photography, textiles, mosaic or tile wall hangings, mixed-media or assemblage, digital art displays, artwork utilizing electricity or digital components, relief or wall-mounted sculptural works (under 4" depth).

Wall-based pieces will be located on the porcelain tile walls at the north and south ends of the gate lounges. To avoid interference with the adjacent seating and air delivery, the site for these pieces is a zone five feet above the floor, three and a half feet below the ceiling. Pieces may be relocated between gate lounges occasionally, giving passengers new experiences of the art over time. As pieces will be within the passenger space, frames should be designed to withstand occasional contact from passengers. Frames with UV-resistant plexiglass to be supplied by artist as part of the commission budget based on framing guidelines to be provided.

The use of archival materials (i.e. indelible inks, stable materials and primers, UV resistant plexiglass, sealed topcoat, etc) is required, as installation will be exposed to natural light through perimeter glazing, air circulation and high-traffic from travelers. Installation shall not interfere with functional lighting requirements within the space. The total artwork area may not exceed 4' h x 20' w x 4" d.

STRUCTURAL PROVISIONS:

Hanging pieces not to exceed 75lb. Works to be suspended from picture rail using D rings fastened to the frame. Mixed-media or digital display works may require a cleat system for installation stability.

ELECTRICAL AND LIGHTING PROVISIONS:

Installation will be exposed to natural light through perimeter glazing. Installation shall not interfere with functional lighting requirements within the space.

MECHANICAL PROVISIONS:

Expected air temperatures in the space are within 70-75 degrees Fahrenheit and 50-15% relative humidity. Air delivery is provided through high-velocity diffusers above the location where the piece hung. Installation shall not interfere with mechanical system.

CODE, LIFE SAFETY, AND ADA REQUIREMENTS:

The installation shall not obstruct paths of passenger circulation or egress. Fire sprinklers are located within the ceiling in this space. The art installation shall conform to the relevant codes including IBC 2012 and NFPA 13. All materials used must be within the fire and smoke classifications specified by code.

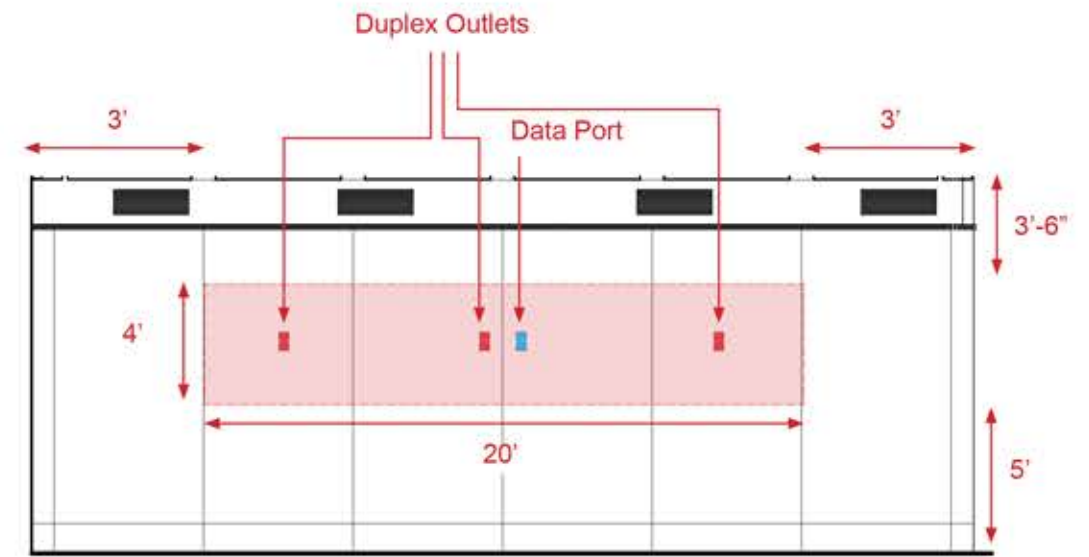
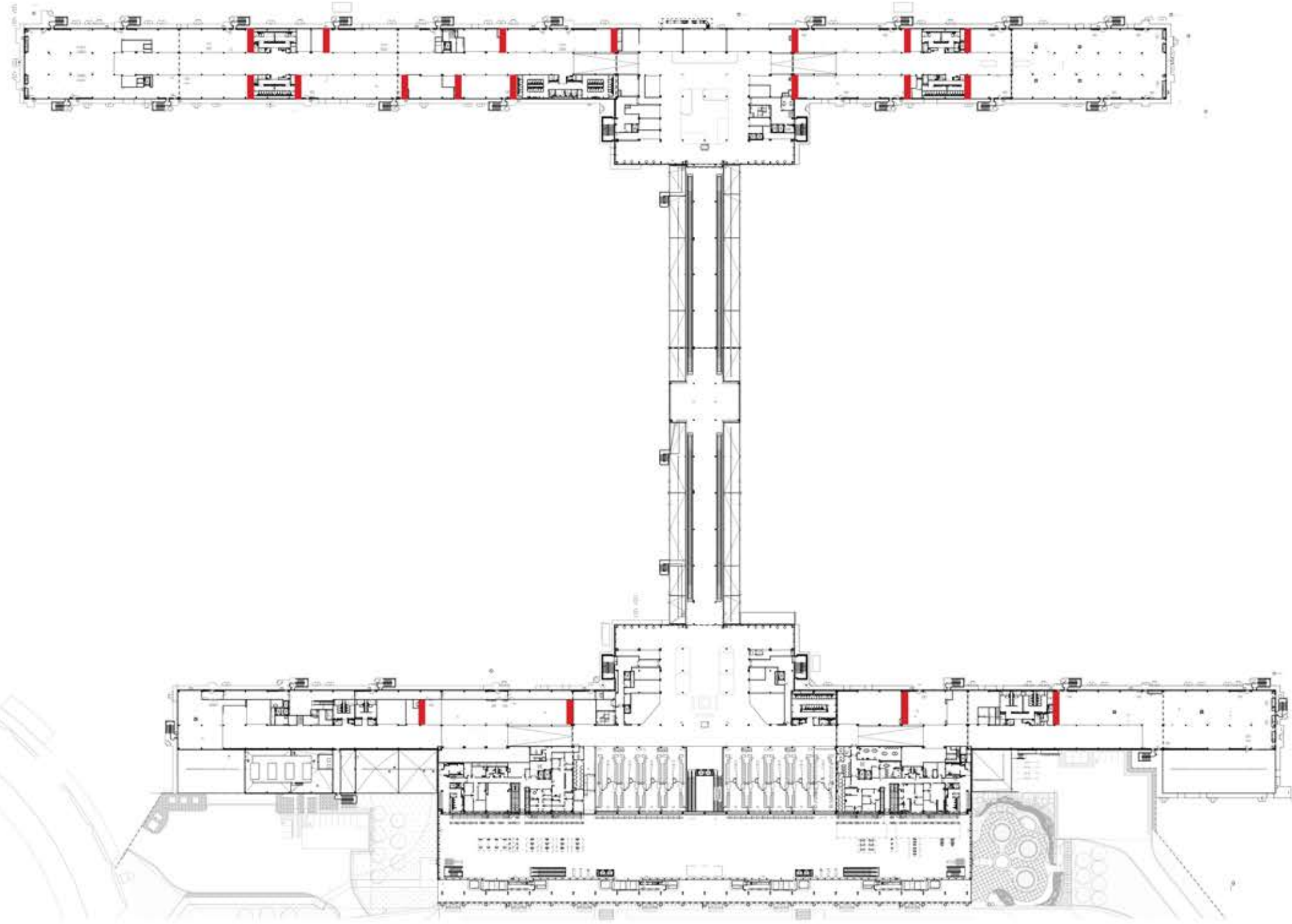
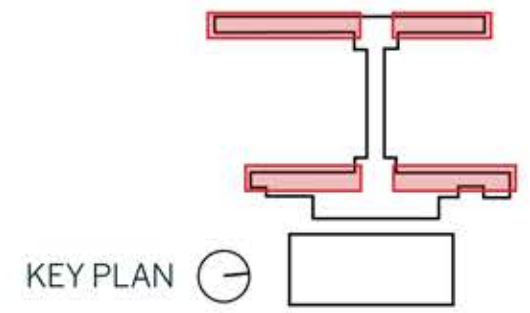


Conceptual perspectives show spatial configuration only. Refer to contract drawings for dimensions, finishes, and final design.

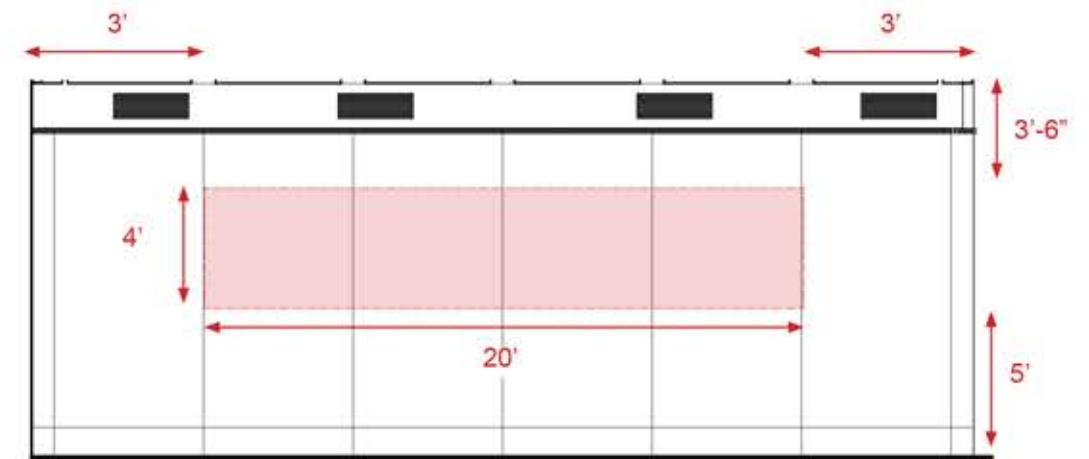
To view full RFP visit www.buildkci.com/call-for-artists/

TERMINAL - CONCOURSES

WALL-BASED WORKS



Interior Elevation - Power and Data-supplied Holdroom
North/South Wall
Not To Scale

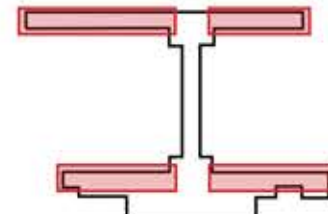


Interior Elevation - Typical and Reinforced Holdroom
North/South Walls
Not To Scale

Partial Plan - Check-in Hall South - Configuration Mirrored at North
Not To Scale

TERMINAL - CONCOURSES

WALL-BASED WORKS



KEY PLAN 

