



# ART/SCULPTURE LOCATIONS

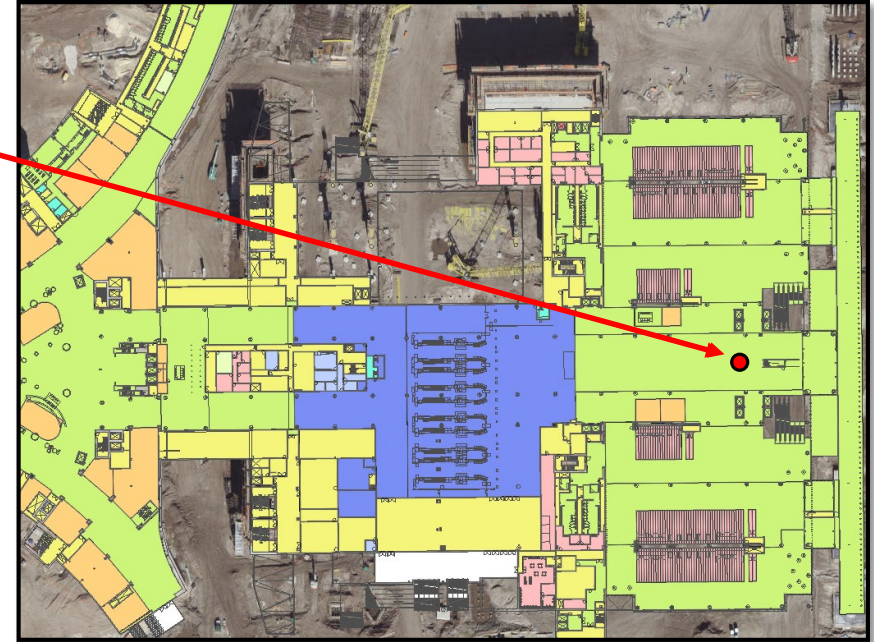
SOUTH TERMINAL "C"

June 16, 2021

Level 2 Departures — Facing East with Back to Security Checkpoint



Locate centered between and in line with glass elevators. This keeps the North/South circulation open. Maximum Base 5' x 5'. Maximum Height 13' including Base. Maximum Weight 1250 pounds (50lbs/Square Foot).

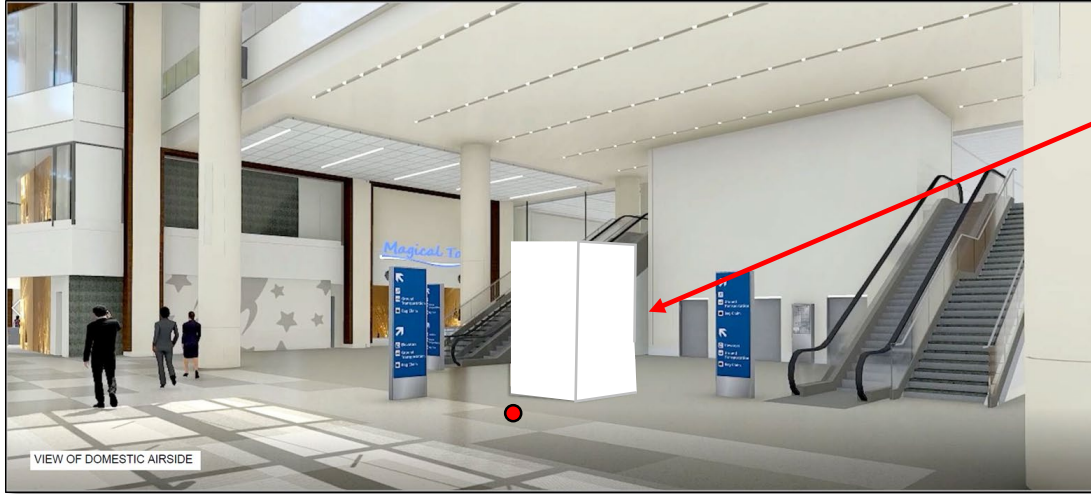


# ART/SCULPTURE LOCATIONS

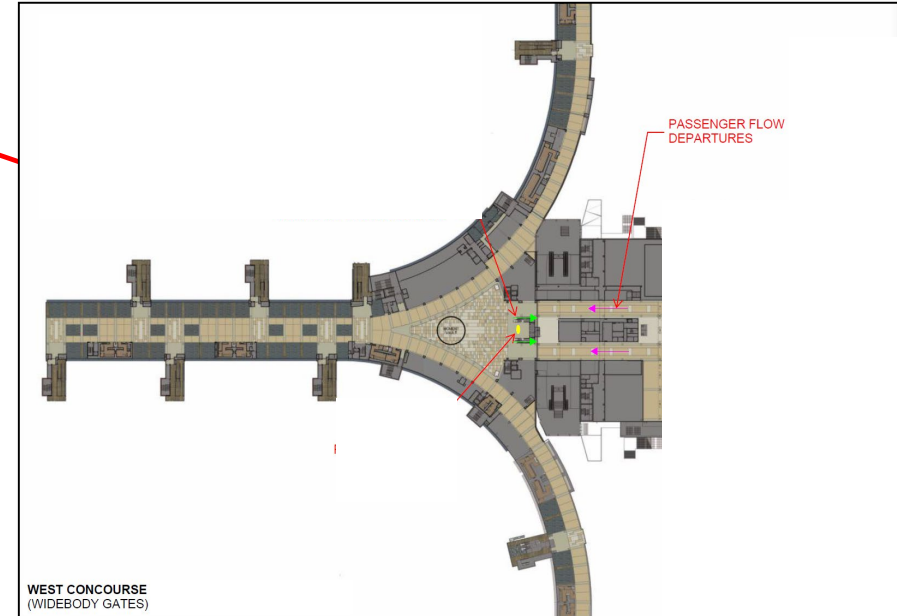
## SOUTH TERMINAL "C" — LANDSIDE — LEVEL 2

June 16, 2021

Level 2 Departures – Facing East with Back to Security Checkpoint



Locate centered between escalators and in line with front edge of escalators. This keeps the circulation open. Maximum Base 5' x 5'. Maximum Height 16' including Base. Maximum Weight 1250 pounds (50lbs/Square Foot).



# ART/SCULPTURE LOCATIONS

SOUTH TERMINAL "C" – AIRSIDE – LEVEL CONCOURSE

June 16, 2021